

Maple Leaf Potholder

Instructions

Charts

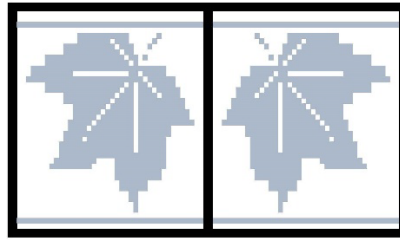
Written Pattern

Video Tutorial



Heather Noble Designs

Maple Leaf Pot Holder and Video Tutorial



[Video Tutorial Link](#)

Size: (DK yarn with 3.75mm hook) 9"x 9"
(Worsted weight yarn with 5mm hook) 11"x 11"

Yarn:

Color A – 76 yds

Color B – 99 yds

Abbreviations: US terms

There is a full Stitch Key with video tutorial links for each stitch used in this pattern located at the end of this instructions packet.

New abbreviation for in-the-round designs:

TS-Turning Stitch: work a SC under both loops (remember to mark these with a stitch marker to ensure a nice straight side seam!)

I also have a Facebook group dedicated to answering questions about my patterns and building community. Please join us! <https://linktr.ee/heathernobledesigns>

****This pattern was designed by Heather Noble****

Please do not share, copy or distribute this pattern.

You may sell your finished projects.

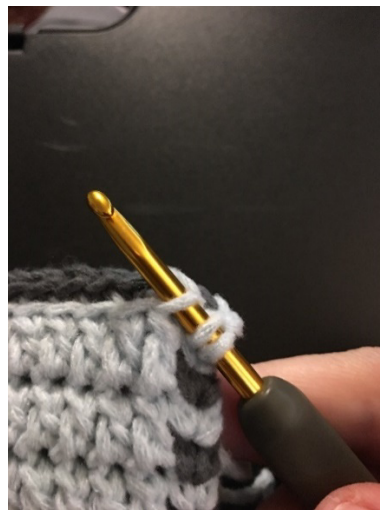
Please tag me in any photos of your projects that you post online
@heathernobledesigns.

Mosaic Crochet Basics

All work is done on the front side of the work (do not turn). Alternate colors every row.



All SC stitches are worked into the back loops of same row. (SCBLO)



All DC stitches are worked into the corresponding front loop 2 rows below. (DCFLO)

Getting Started

Base: Make an I-cord CH of 38, CH 1

SC under both loops of the 1st st (mark with stitch marker),

SCFLO 36, SC under both loops of last st (mark with stitch marker), TURN

SCFLO 36 across backside

*Starting in Round 1, change color on final pull-through of last stitch

.....
The charts are numbered from left to right for layout purposes, but **crochet charts are read from right to left** (unless you are a left-handed crocheter). There is a red arrow on chart **p.2** to show you where to start your project.

Here is an example of how to lay out your charts. I would suggest using the Knit Companion app. Many of my pattern testers have found using a stitch marker in their project for the first stitch of each page helped them stay on track really well.



P.1

P.2

How to read the chart

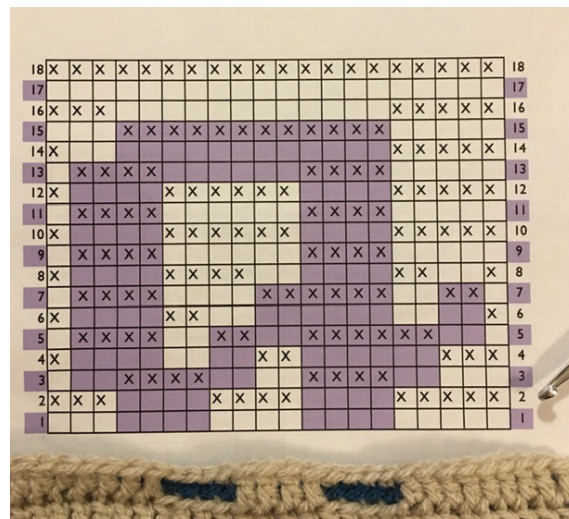
The following 2 pages use my D'nealian Font lower case 'a' pattern as a sample to illustrate how to read the charts. (This is not the actual pattern-it is for instructional purposes to illustrate beginning mosaic crochet concepts). My favorite method for using charts is the **Knit Companion** app. (Don't let the name throw you, it's for crochet too!) You can link this app with your Ravelry store and access all of your patterns, as well as save your downloaded PDF patterns to Dropbox and access them that way.

Row 1 Example

18	X	X	X	X	X	X	X	X	X	X	X	X	X	X	X	X	X	18
17																		17
16	X	X	X													X	X	16
15				X	X	X	X	X	X	X	X	X	X	X				15
14	X															X	X	14
13		X	X	X	X							X	X	X	X			13
12	X					X	X	X	X	X	X					X	X	12
11		X	X	X	X							X	X	X	X			11
10	X					X	X	X	X	X	X					X	X	10
9		X	X	X	X							X	X	X	X			9
8	X					X	X	X	X							X	X	8
7		X	X	X	X					X	X	X	X	X			X	7
6	X					X	X										X	6
5		X	X	X	X			X	X			X	X	X	X	X		5
4	X									X	X					X	X	4
3				X	X	X	X					X	X	X	X			3
2	X	X	X					X	X	X	X					X	X	2
1																		1

Row 1 of this example pattern is the blue row of SC (in back loops only). Notice that even though the shading of the pattern changes to show what the final product will look like...row 1 is entirely empty boxes all the way across. That means SC into every stitch. Each row alternates colors. **Color A is the color of the design.**

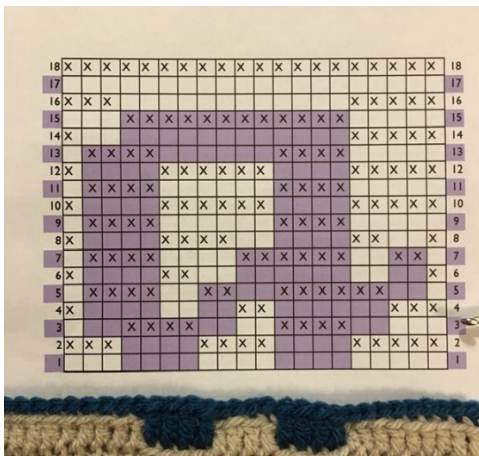
Row 2 Example



Join with your new color in the last stitch of each round. In row 2 (color B), the X means DC into the front loop of the corresponding stitch 2 rows below and the means SC into back loop of the current row.

Work the row from right to left: DC 5, SC 4, DC 4, SC 4, DC 3.

Row 3



Final product!



Stitch Key

Updated 5.31.22

1

I have created many of the stitches and notation system in my designs.
There is not a current standard notation system for Mosaic Overlay
crochet, so please take some time to familiarize yourself with mine.

I have used the Craft Yarn Council Standards abbreviations.
Here is a link to that list. <https://www.craftyarnCouncil.com/standards>

***Please note-several symbols are color-coded.**
Do not print your charts in grey-scale!

1) **SCBLO**

Chart symbol



Written abbreviation

SC

Definition

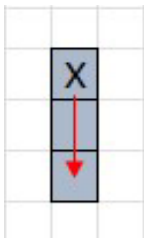
Single Crochet into back loop of
current row.



[Video Tutorial: SC](#)

2) **DCFLO**

Chart symbol



Written abbreviation

DC

Definition

Double Crochet into front loop of
corresponding stitch 2 rows below.



[DC - Original Tutorial](#)

[UPDATE: DC](#)

Stitch Key

Updated 5.31.22

2

- 3) **Border Stitch** (this is the new version. I've also included the video link for the original version if you prefer that method.

Chart symbol



Written abbreviation

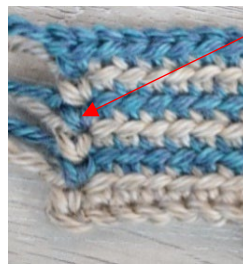
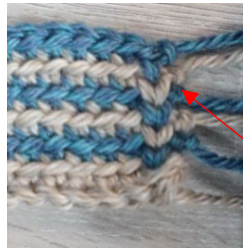
BS

Definition

Use a Border Stitch to start and end each row beginning in row 2. (*Row 1 is the foundation row)

Beginning BS: make a standing SC between the legs of the first stitch.

Ending BS: make a SC between the legs of the last stitch, CH 1. Cut yarn.



[Border Stitch - Original version](#)

[Updated Border Stitch Tutorial](#)

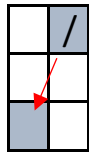
Stitch Key

Updated 5.31.22

3

4) Angled DC 1L (can be made in Color A or Color B)

Chart symbol



Written abbreviation

Angled DC 1L



Definition

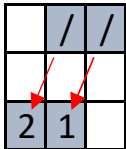
Work an angled double crochet 1 to the left.

[Angled DC 1L - Original Tutorial](#)

[UPDATE: Angled DC 1L](#)

*Example 1: Angled DC 1L in multiples

Chart symbol



Written abbreviation

[Angled DC 1L] 2 times

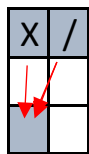


Definition

Work 2 angled DC 1L in a row.

*Example 2: Combined with DC

Chart symbol



Written abbreviation

sk 1, DC 2 in the next st



Definition

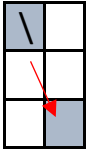
Skip 1, work 2 DC stitches into the next loop. (Both stitches into the same loop)

Stitch Key

Updated 5.31.22

5) **Angled DC 1R** (can be made in Color A or Color B)

Chart symbol



Written abbreviation

Angled DC 1R



Definition

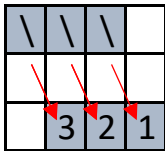
Work an angled double crochet 1 to the right.

[Angled DC 1R - Original Tutorial](#)

[UPDATE: Angled DC 1R](#)

*Example 1: Angled DC 1R in multiples

Chart symbol



Written abbreviation

[Angled DC 1R] 3 times

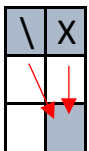


Definition

Work 3 angled DC 1R in a row.

*Example 2: Combined with DC

Chart symbol



Written abbreviation

DC 2 in the next st, sk 1



Definition

Work 2 DC stitches into the next loop, skip 1. (Both stitches into the same loop.)

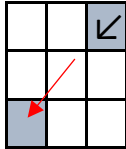
Stitch Key

Updated 5.31.22

5

6) **Angled DC 2L** (can be made in Color A or Color B)

Chart symbol



Written abbreviation

Angled DC 2L



Definition

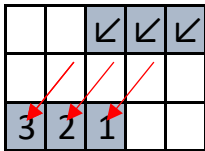
Work an angled double crochet
2 to the left.

[Angled DC 2L - Original Tutorial](#)

[UPDATE: Angled DC 2L](#)

*Example 1: Angled DC 2L in multiples

Chart symbol



Written abbreviation

[Angled DC 2L] 3 times

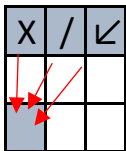


Definition

Work 3 angled DC 2L in a row.

*Example 2: Combined with / and DC

Chart symbol



Written abbreviation

sk 2, DC 3 in the next st



Definition

Skip 2, work 3 DC stitches into the
same loop.

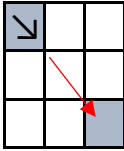
Stitch Key

Updated 5.31.22

6

7) **Angled DC 2R** (can be made in Color A or Color B)

Chart symbol



Written abbreviation

Angled DC 2R



Definition

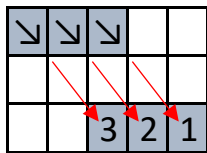
Work an angled double crochet 2 to the right.

[Angled DC 2R - Original Tutorial](#)

[UPDATE: Angled DC 2R](#)

*Example 1: Angled DC 2R in multiples

Chart symbol



Written abbreviation

[Angled DC 2R] 3 times

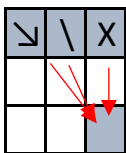


Definition

Work 3 angled DC 2L in a row.

*Example 2: Combined with / and DC

Chart symbol



Written abbreviation

DC 3 in the next st, sk 2



Definition

Work 3 DC stitches into the same loop, skip 2.

*Last stitch: Change color and turn to Front

Start here
after
completing
the base.

***Base:** Make an I-cord CH of 38, CH 1
SC under both loops of the 1st st (mark with stitch marker),
SCFLO 36, SC under both loops of last st (mark with stitch marker), TURN
SCFLO 36 across backside

Base-Color B: Make an I-cord CH of 38, CH 1

SC under both loops of the 1st st (mark with stitch marker),
SCFLO 36, SC under both loops of last st (mark with stitch marker), TURN
SCFLO 36 across backside

Round 1 - Color B: TS, SC 36, TS, SC 36

Round 2 - Color A: TS, SC 36, TS, SC 36

Round 3 - Color B: TS, DC 13, SC, DC 22, TS, DC 22, SC, DC 13

Round 4 - Color A: TS, SC 13, DC, SC 22, TS, SC 22, DC, SC 13

Round 5 - Color B: TS, DC 13, SC 2, DC 21, TS, DC 21, SC 2, DC 13

Round 6 - Color A: TS, SC 13, DC 2, SC 21, TS, SC 21, DC 2, SC 13

Round 7 - Color B: TS, DC 11, SC 6, DC 19, TS, DC 19, SC 6, DC 11

Round 8 - Color A: TS, SC 11, DC 6, SC 19, TS, SC 19, DC 6, SC 11

Round 9 - Color B: TS, DC 8, SC 10, DC 18, TS, DC 18, SC 10, DC 8

Round 10 - Color A: TS, SC 8, DC 10, SC 18, TS, SC 18, DC 10, SC 8

Round 11 - Color B: TS, DC 7, SC 11, DC 3, SC 9, DC 6, TS, DC 6, SC 9, DC 3, SC 11,
DC 7

Round 12 - Color A: TS, SC 7, DC 11, SC, [Angled DC 2L] 9 times, SC 8, TS, SC 8,
[Angled DC 2R] 9 times, SC, DC 11, SC 7

Round 13 - Color B: TS, DC 7, SC 21, DC 8, TS, DC 8, SC 21, DC 7

Round 14 - Color A: TS, SC 7, DC 6, SC, DC 14, SC 8, TS, SC 8, DC 14, SC, DC 6, SC 7

Round 15 - Color B: TS, DC 6, SC 7, DC, SC 14, DC 8, TS, DC 8, SC 14, DC, SC 7, DC 6

Round 16 - Color A: TS, SC 6, DC 7, SC, DC 8, SC, DC 4, SC 9, TS, SC 9, DC 4, SC, DC 8, SC, DC 7, SC 6

Round 17 - Color B: TS, DC, SC 12, DC, SC 7, Angled DC 1L, SC 5, DC 9, TS, DC 9, SC 5, Angled DC 1R, SC 7, DC, SC 12, DC

Round 18 - Color A: TS, SC 2, DC 11, SC, DC 7, SC, DC 4, SC 10, TS, SC 10, DC 4, SC, DC 7, SC, DC 11, SC 2

Round 19 - Color B: TS, DC 2, SC 11, DC, SC 5, Angled DC 2L, SC 6, DC 10, TS, DC 10, SC 6, Angled DC 2R, SC 5, DC, SC 11, DC 2

Round 20 - Color A: TS, SC 3, DC 10, SC, DC 5, SC, DC 5, SC 11, TS, SC 11, DC 5, SC, DC 5, SC, DC 10, SC 3

Round 21 - Color B: TS, DC 3, SC 10, DC, SC 3, Angled DC 2L, SC 9, DC 9, TS, DC 9, SC 9, Angled DC 2R, SC 3, DC, SC 10, DC 3

Round 22 - Color A: TS, SC 4, DC 4, SC, DC 4, SC, DC 3, SC, DC 9, SC 9, TS, SC 9, DC 9, SC, DC 3, SC, DC 4, SC, DC 4, SC 4

Round 23 - Color B: TS, DC 4, SC 6, Angled DC 2R, SC 2, DC, SC, Angled DC 2L, SC 15, DC 5, TS, DC 5, SC 15, Angled DC 2R, SC, DC, SC 2, Angled DC 2L, SC 6, DC 4

Round 24 - Color A: TS, SC 5, DC 5, SC, DC 2, SC, DC, SC, DC 15, SC 5, TS, SC 5, DC 15, SC, DC, SC, DC 2, SC, DC 5, SC 5

Round 25 - Color B: TS, DC 5, SC 7, Angled DC 2R, SC 22, DC, TS, DC, SC 22, Angled DC 2L, SC 7, DC 5

Round 26 - Color A: TS, SC 7, DC 5, SC, DC 2, SC 10, DC 9, SC 2, TS, SC 2, DC 9, SC 10, DC 2, SC, DC 5, SC 7

Round 27 - Color B: TS, DC 7, SC 27, DC 2, TS, DC 2, SC 27, DC 7

Round 28 - Color A: TS, SC 11, Angled DC 1L, SC, DC, SC, DC 16, SC 5, TS, SC 5, DC 16, SC, DC, SC, Angled DC 1R, SC 11

Round 29 - Color B: TS, DC 11, SC, DC, SC 3, Angled DC 2R, SC 14, DC 5, TS, DC 5, SC 14, Angled DC 2L, SC 3, DC, SC, DC 11

Round 30 - Color A: TS, SC 10, Angled DC 1L, SC 3, DC 2, SC, DC 10, SC 9, TS, SC 9, DC 10, SC, DC 2, SC 3, Angled DC 1R, SC 10

Round 31 - Color B: TS, DC 10, SC, DC 3, SC 4, Angled DC 2R, SC 8, DC 9, TS, DC 9, SC 8, Angled DC 2L, SC 4, DC 3, SC, DC 10

Round 32 - Color A: TS, SC 8, Angled DC 2L, SC 6, DC 3, SC, DC 5, SC 12, TS, SC 12, DC 5, SC, DC 3, SC 6, Angled DC 2R, SC 8

Round 33 - Color B: TS, DC 8, SC, DC 6, SC 9, DC 12, TS, DC 12, SC 9, DC 6, SC, DC 8

Round 34 - Color B: TS, SC 36, TS, SC 36

Round 35 - Color B: TS, SC under BOTH loops of each front and corresponding back st to join (36), TS, Cut yarn and weave in end