

Mosaic Crochet 101

PROJECT 2



Heather Noble Designs

Welcome to Mosaic Overlay 101! I'm so glad you've joined me!

Project 2 is a Star motif. It's a design element I've incorporated into several of my patterns including the Texas Blanket and pillow (and a couple of upcoming designs that haven't been release yet).

Here is the link to the video for this project. [Project 2 Video](#)

In this packet, you'll find a chart as well as a written pattern. I've also included a left-handed chart for the first time. If you are left-handed, please give feedback! (The written pattern is right-handed only). Use which ever method you're most comfortable with. You'll find a red arrow at the start of the chart in the bottom right corner. Charts are read from right to left (Left handers read from left to right).

For this project, you will need 2 contrasting colors of yarn. Since we aren't worried about gauge today, it doesn't matter what yarn you choose. Try to use the same brand and weight for both colors and use the recommended hook size. (The label will tell you what size). For the sample in the tutorial, I used Caron Simply Soft yarn with H-5mm hook.

Go ahead and click on the video link and let's get started!!! 😊

Project #2: Star

M.O. 101
June 2022

BS	X																									X	BS	25	A				
BS		X		X		X		X		X		X		X		X		X		X		X		X		X		X	BS	24	B		
BS	X																										X	BS	23	A			
BS		X		X																						X	X	BS	22	B			
BS	X				X	X	X	X	X	X	X	X	X	X	X	X	X	X	X	X	X	X	X	X	X	X		X	BS	21	A		
BS		X		X																						X	X	BS	20	B			
BS	X				X	X	X	X	X	X	X	X	X	X	X	X	X	X	X	X	X	X	X	X	X		X	BS	19	A			
BS		X		X																						X	X	BS	18	B			
BS	X				X	X	X	X	X	X	X	X	X	X	X	X	X	X	X	X	X	X	X	X	X		X	BS	17	A			
BS		X		X																						X	X	BS	16	B			
BS	X				X																					X		X	BS	15	A		
BS		X		X																						X	X	BS	14	B			
BS	X				X	X	X																		X	X	X		X	BS	13	A	
BS		X		X																						X	X	BS	12	B			
BS	X				X	X	X	X					X												X	X	X	X		X	BS	11	A
BS		X		X																						X	X	BS	10	B			
BS	X				X	X	X	X					X	X	X	X	X	X	X	X	X	X	X	X	X		X	BS	9	A			
BS		X		X																						X	X	BS	8	B			
BS	X				X	X	X	X	X	X	X	X	X	X	X	X	X	X	X	X	X	X	X	X	X		X	BS	7	A			
BS		X		X																						X	X	BS	6	B			
BS	X																										X	BS	5	A			
BS		X		X		X		X		X		X		X		X		X		X		X		X		X	X	BS	4	B			
BS	X																											X	BS	3	A		
BS																												BS	2	B			
Foundation Row																																	
25	24	23	22	21	20	19	18	17	16	15	14	13	12	11	10	9	8	7	6	5	4	3	2	1			1	A					

START

Row 1 Foundation Row - Color A
 CH 28, SC in the 2nd CH from the hook and in each CH across. **(27)**

Row 2 - Color B
 Starting in row 2, each row begins and ends with a Border Stitch (BS). **BS, SCBLO 25, BS**

A	25	BS	X																							X	BS					
B	24	BS		X		X		X		X		X		X		X		X		X		X		X		X		BS				
A	23	BS	X																								X	BS				
B	22	BS		X		X																				X		X	BS			
A	21	BS	X				X	X	X	X	X	X	X	X	X	X	X	X	X	X	X	X	X	X	X	X			X	BS		
B	20	BS		X		X																				X		X	BS			
A	19	BS	X				X	X	X	X	X	X	X	X	X	X	X	X	X	X	X	X	X	X	X	X			X	BS		
B	18	BS		X		X																				X		X	BS			
A	17	BS	X				X	X	X	X	X	X	X	X	X	X	X	X	X	X	X	X	X	X	X	X			X	BS		
B	16	BS		X		X																				X		X	BS			
A	15	BS	X				X																			X			X	BS		
B	14	BS		X		X																				X		X	BS			
A	13	BS	X				X	X	X																X	X	X			X	BS	
B	12	BS		X		X																				X		X	BS			
A	11	BS	X				X	X	X	X				X											X	X	X	X			X	BS
B	10	BS		X		X																				X		X	BS			
A	9	BS	X				X	X	X	X				X	X	X									X	X	X	X			X	BS
B	8	BS		X		X																				X		X	BS			
A	7	BS	X				X	X	X	X		X	X	X	X	X	X	X	X	X	X	X	X	X	X	X	X	X			X	BS
B	6	BS		X		X																				X		X	BS			
A	5	BS	X																										X	BS		
B	4	BS		X		X		X		X		X		X		X		X		X		X		X		X		X	BS			
A	3	BS	X																										X	BS		
B	2	BS																												BS		
A	1	Foundation Row																														
			1	2	3	4	5	6	7	8	9	10	11	12	13	14	15	16	17	18	19	20	21	22	23	24	25					

START

Row 1 Foundation Row - Color A
 CH 28, SC in the 2nd CH from the hook and in each CH across. **(27)**

Row 2 - Color B
 Starting in row 2, each row begins and ends with a Border Stitch (BS). **BS, SCBLO 25, BS**

Mosaic Overlay 101:
Project 2 – Star

Row 1 - Color A: CH 28, SC in the 2nd CH from the hook and in each CH across. **(27)**

Row 2 - Color B: BS, SC 25, BS

Row 3 - Color A: BS, DC, SC 23, DC, BS

Row 4 - Color B: BS, [SC, DC] 12 times, SC, BS

Row 5 - Color A: BS, DC, SC 23, DC, BS

Row 6 - Color B: BS, [SC, DC] 2 times, SC 17, [DC, SC] 2 times, BS

Row 7 - Color A: BS, DC, SC 3, DC 4, SC, DC 7, SC, DC 4, SC 3, DC, BS

Row 8 - Color B: BS, [SC, DC] 2 times, SC 17, [DC, SC] 2 times, BS

Row 9 - Color A: BS, DC, SC 3, DC 4, SC 3, DC 3, SC 3, DC 4, SC 3, DC, BS

Row 10 - Color B: BS, [SC, DC] 2 times, SC 17, [DC, SC] 2 times, BS

Row 11 - Color A: BS, DC, SC 3, DC 4, SC 4, DC, SC 4, DC 4, SC 3, DC, BS

Row 12 - Color B: BS, [SC, DC] 2 times, SC 17, [DC, SC] 2 times, BS

Row 13 - Color A: BS, DC, SC 3, DC 3, SC 11, DC 3, SC 3, DC, BS

Row 14 - Color B: BS, [SC, DC] 2 times, SC 17, [DC, SC] 2 times, BS

Row 15 - Color A: BS, DC, SC 3, DC, SC 15, DC, SC 3, DC, BS

Row 16 - Color B: BS, [SC, DC] 2 times, SC 17, [DC, SC] 2 times, BS

Row 17 - Color A: BS, DC, SC 3, DC 6, SC 5, DC 6, SC 3, DC, BS

Row 18 - Color B: BS, [SC, DC] 2 times, SC 17, [DC, SC] 2 times, BS

Row 19 - Color A: BS, DC, [SC 3, DC 7] 2 times, SC 3, DC, BS

Row 20 - Color B: BS, [SC, DC] 2 times, SC 17, [DC, SC] 2 times, BS

Row 21 - Color A: BS, DC, SC 3, DC 8, SC, DC 8, SC 3, DC, BS

Row 22 - Color B: BS, [SC, DC] 2 times, SC 17, [DC, SC] 2 times, BS

Row 23 - Color A: BS, DC, SC 23, DC, BS

Row 24 - Color B: BS, [SC, DC] 12 times, SC, BS

Row 25 - Color A: BS, DC, SC 23, DC, BS

Stitch Key

Updated 5.31.22

I have created many of the stitches and notation system in my designs.
There is not a current standard notation system for Mosaic Overlay
crochet, so please take some time to familiarize yourself with mine.

I have used the Craft Yarn Council Standards abbreviations.
Here is a link to that list. <https://www.craftyarnCouncil.com/standards>

***Please note-several symbols are color-coded.
Do not print your charts in grey-scale!**

1) **SCBLO**

Chart symbol



Written abbreviation

SC

Definition

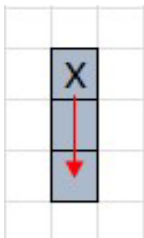
Single Crochet into back loop of
current row.



[Video Tutorial: SC](#)

2) **DCFLO**

Chart symbol



Written abbreviation

DC

Definition

Double Crochet into front loop of
corresponding stitch 2 rows below.



[DC - Original Tutorial](#)

[UPDATE: DC](#)

Stitch Key

Updated 5.31.22

3) **Border Stitch** (this is the new version. I've also included the video link for the original version if you prefer that method.)

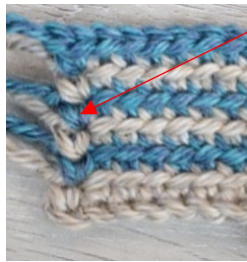
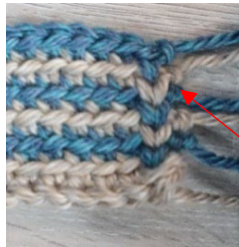
Chart symbol



Written abbreviation

BS

Definition



Use a Border Stitch to start and end each row beginning in row 2. (*Row 1 is the foundation row)

Beginning BS: make a standing SC between the legs of the first stitch.

Ending BS: make a SC between the legs of the last stitch, CH 1. Cut yarn.

[Border Stitch - Original version](#)

[Updated Border Stitch Tutorial](#)