

Mosaic Crochet 101

PROJECT 3

BUTTONHOLES



Heather Noble Designs

Project 3: Buttonholes

Welcome to the third session of Mosaic Overlay 101! I'm so glad you've joined me!

The July 2022 CAL pillow project includes buttonholes, so I wanted to make sure to cover that in this series. Since this is a very small practice swatch, I have added a bonus project just for fun- the Hearts Placemat! ❤️

[Buttonhole Video](#)

In this packet, you'll find a chart as well as a written pattern. Use which ever method you're most comfortable with. You'll find a red arrow at the start of the chart in the bottom right corner. Charts are read from right to left (Left handers read from left to right).



Special Charts Instructions for buttonholes:

The blacked-out squares indicated the buttonholes. At this symbol, CH 4, skip the next 4 stitches.

For this project, you will need 2 contrasting colors of yarn. Since we aren't worried about gauge today, it doesn't matter what yarn you choose. Try to use the same brand and weight for both colors and use the recommended hook size. (The label will tell you what size). For the samples in the tutorial, I used Caron Simply Soft for the buttonhole swatch, and Lion Brand Heartland for the Hearts placemat with H-5mm hook.

Go ahead and click on the video link and let's get started!!! 😊

Project 3

Buttonholes

M.O. 101
June 2022

[illegible]

Row 1 - Foundation Row - Color A

Option 1: CH 39, SC in the 2nd CH from the hook and in each CH across. **(38)**

Option 2: make an I-cord chain of (38), CH 1, SC into each I-cord st. **(38)**

Row 2 - Color B

Starting in row 2, each row begins and ends with a Border Stitch (BS). **BS, SCBLO 36, BS**

Row 3 - Color A: BS, SC 4, [CH 4, sk 4, SC 8] 2 times, CH 4, sk 4, SC 4, BS

***Special instructions for Buttonholes:**

I use this black bar to indicate buttonholes in my charts. At this symbol, chain 4, skip the next 4 stitches.

Row 4 - Color B (finish buttonholes): BS, SC 4, [SC 4 in the CH sp, SC 8] 2 times, SC 4 in the CH sp, SC 4, BS

Row 5 - Color A: BS, SC 36, BS

Project 3

Buttonholes (Left Hand Version)

M.O. 101

June 2022

[illegible]

Row 1 - Foundation Row - Color A

Option 1: CH 39, SC in the 2nd CH from the hook and in each CH across. **(38)**

Option 2: make an I-cord chain of (38), CH 1, SC into each I-cord st. **(38)**

Row 2 - Color B

Starting in row 2, each row begins and ends with a Border Stitch (BS). **BS, SCBLO 36, BS**

Row 3 - Color A: BS, SC 4, [CH 4, sk 4, SC 8] 2 times, CH 4, sk 4, SC 4, BS

***Special instructions for Buttonholes:**

I use this black bar to indicate buttonholes in my charts. At this symbol, chain 4, skip the next 4 stitches.

Row 4 - Color B (finish buttonholes): BS, SC 4, [SC 4 in the CH sp, SC 8] 2 times, SC 4 in the CH sp, SC 4, BS

Row 5 - Color A: BS, SC 36, BS

Instructions
Charts
Written Pattern
Stitch Key



Heather Noble Designs

Hearts Placemat



Size will vary depending on yarn weight and hook size.

Here are some approximate dimensions:

15" x 11" (DK yarn with 3.75mm hook)

19" x 13" (Worsted yarn with 5mm hook)

Yarn: Color A- 155 yds (Design Color)

Color B- 86 yds (Background Color)

Abbreviations: US terms

There is a stitch key located at the end of this packet with photos and video tutorial links for each stitch used in this pattern.

I have these video tutorials available should you need further clarification.

[Mosaic Crochet Tutorial Series with free companion patterns](#)

[Double Border Tutorial](#)

[Tassels Tutorial](#)

I have a Facebook group dedicated to answering questions and building community around my patterns. Please join us!

<https://linktr.ee/heathernobledesigns>

****This pattern was designed by Heather Noble****

Please do not share, copy or distribute this pattern.

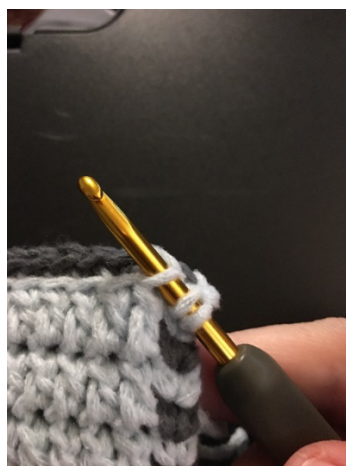
You may sell your finished projects. Please tag me in any photos of your projects that you post online @heathernobledesigns.

Mosaic Crochet Basics

All work is done on the front side of the work (do not turn). Alternate colors every row.



All SC stitches are worked into the back loops of same row. (SCBLO)



All DC stitches are worked into the corresponding front loop 2 rows below. (DCFLO)

Getting Started: First 2 rows

Crochet charts are read from right to left (unless you are a left-handed crocheter- I've included a left handed version of the chart). There is a red arrow on the chart to show you where to start your project.

Row 1 Foundation Row: Color A

Option 1: CH 78, SC in the 2nd CH from the hook and in each CH across. **(77)**

Option 2: Make an I-cord CH of 77, CH 1, SC under both loops of each I-cord st across. **(77)**

Row 2: Color B

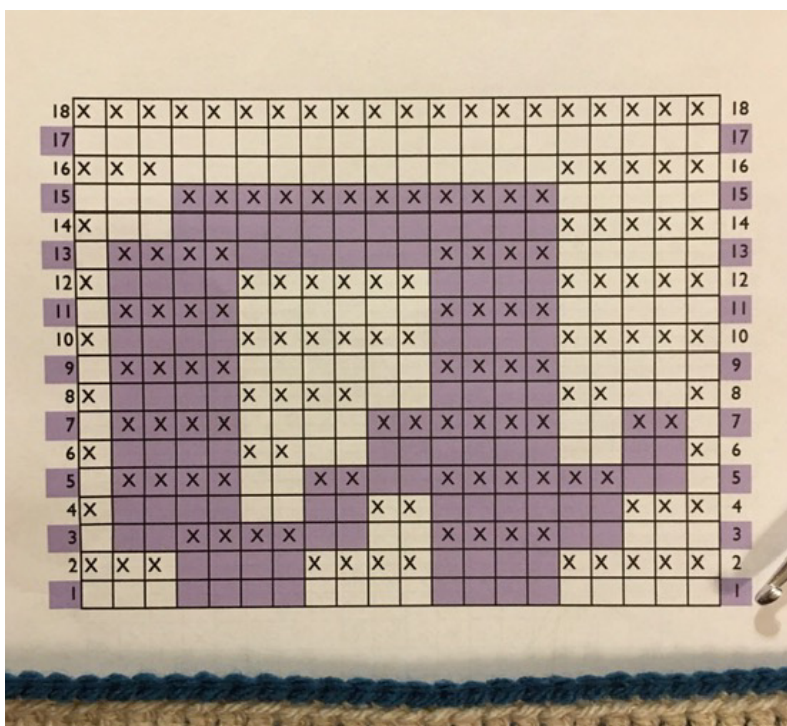
Starting in row 2, each row begins and ends with a Border Stitch (BS). If you are planning to finish this project with tassels, leave tails of approx. 6" on each end.

BS, SCBLO 75, BS

How to read the chart

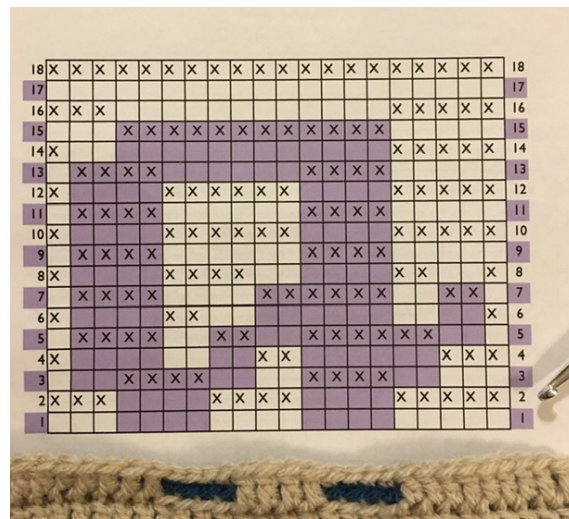
The following 2 pages use my D'nealian Font lower case 'a' pattern as a sample to illustrate how to read the charts. (This is not the actual pattern-it is for instructional purposes to illustrate beginning mosaic crochet concepts). There are many charts in my patterns. I've divided them into sections working the blanket from the bottom up. My favorite method for using charts is the **Knit Companion** app. (Don't let the name throw you, it's for crochet too!) You can link this app with your Ravelry store and access all of your patterns, as well as save your downloaded PDF patterns to Dropbox and access them that way.

Row 1 Example



Row 1 of this example pattern is the blue row of SC (in back loops only). Notice that even though the shading of the pattern changes to show what the final product will look like...row 1 is entirely empty boxes all the way across. That means SC into every stitch. Each row alternates colors. **Color A is the color of the design.**

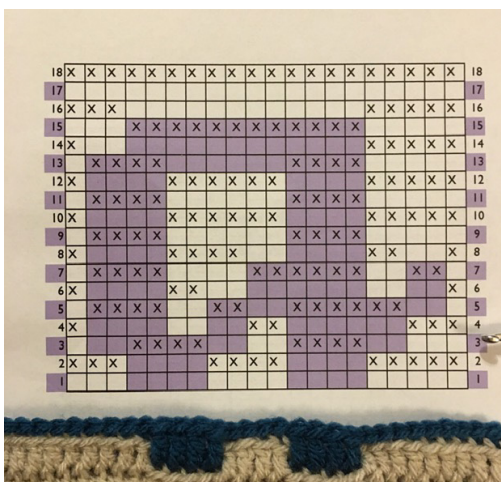
Row 2 Example



In Mosaic Overlay Crochet, you will alternate colors each row-cutting your yarn at the end of each one, and joining with your new color at the beginning.

In row 2, change to color B. The X means DC into the front loop of the corresponding stitch 2 rows below and the means SC into back loop of the current row. As you read the row from right to left, you will work: DC 5, SC 4, DC 4, SC 4, DC 3.

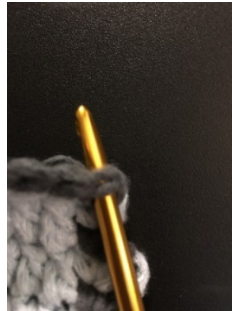
Row 3



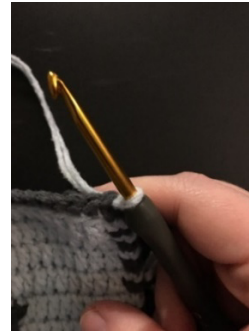
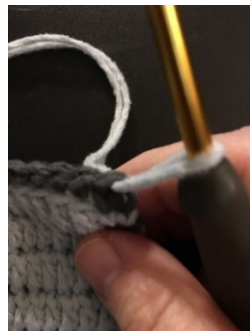
Border Stitch (BS)

You will need a border stitch at the beginning and end of each row (starting in row 2) to make your rows secure. This is the original method – I also have an updated version. See Stitch Key for video tutorial links for both methods.

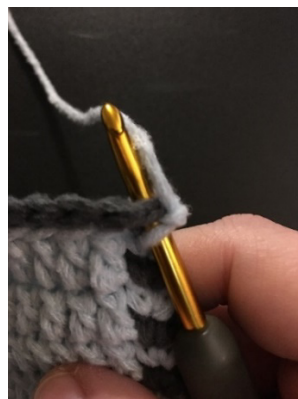
Beginning BS: Insert hook under BOTH loops of first stitch.



Join new yarn and chain 1



SC into same stitch (both loops) to complete the Border Stitch



*For ending BS, repeat this process in reverse. (SC through BOTH loops, then Ch1). Cut yarn.

Finishing

You can choose a variety of ways to finish your placemat. Here are a couple of video tutorials to give you some options:

[Tassels](#)

[Double \(envelope\) Border](#)

I hope you have enjoyed making this project! Please tag me when you post your pictures @heathernobledesigns, I would love to see photos of your work!

© 2022, Heather Noble Designs

Row 1 Foundation Row - Color A

Option 1 (Basic): CH 78, SC in the 2nd CH from the hook and in each CH across. **(77)**

Option 2 (I-cord): Make and I-cord CH of 77, CH 1, SC under both loops of each I-cord st across. **(77)**

Row 2 - Color B

Starting in row 2, each row begins and ends with a Border Stitch (BS). **BS, SCBLO 75, BS**

*There is a stitch key located at the end of the instructions packet with further details on each stitch and technique used in this pattern.

© 2022, Heather Noble Designs

START

© 2022, Heather Noble Designs

© 2022, Heather Noble Designs

Row 1 - Color A: Foundation Row

Option 1 (Basic): CH 78, SC in the 2nd CH from the hook and in each CH across.
(77)

Option 2 (I-cord): Make an I-cord CH of 77, CH 1, SC under both loops of each I-cord st across. **(77)**

Row 2 - Color B: BS, SC 75, BS

Row 3 - Color A: BS, [DC 3, SC 3] 12 times, DC 3, BS

Row 4 - Color B: BS, SC 75, BS

Row 5 - Color A: BS, DC, SC, DC 71, SC, DC, BS

Row 6 - Color B: BS, SC, DC, SC 71, DC, SC, BS

Row 7 - Color A: BS, DC, SC, DC 12, SC, DC 45, SC, DC 12, SC, DC, BS

Row 8 - Color B: BS, SC 75, BS

Row 9 - Color A: BS, DC 13, SC 3, DC 43, SC 3, DC 13, BS

Row 10 - Color B: BS, SC 75, BS

Row 11 - Color A: BS, DC, SC, DC 9, SC 7, DC 39, SC 7, DC 9, SC, DC, BS

Row 12 - Color B: BS, SC, DC, SC 71, DC, SC, BS

Row 13 - Color A: BS, DC, SC, DC 7, SC 11, DC 35, SC 11, DC 7, SC, DC, BS

Row 14 - Color B: BS, SC 75, BS

Row 15 - Color A: BS, DC 7, SC 15, DC 31, SC 15, DC 7, BS

Row 16 - Color B: BS, SC 75, BS

Row 17 - Color A: BS, DC, SC, DC 3, SC 19, DC 13, SC, DC 13, SC 19, DC 3, SC, DC, BS

Row 18 - Color B: BS, SC, DC, SC 71, DC, SC, BS

Row 19 - Color A: BS, DC, SC, DC 2, SC 21, DC 11, SC 3, DC 11, SC 21, DC 2, SC, DC, BS

Row 20 - Color B: BS, SC 75, BS

Row 21 - Color A: BS, DC 4, SC 21, DC 9, SC 7, DC 9, SC 21, DC 4, BS

Row 22 - Color B: BS, SC 75, BS

Row 23 - Color A: BS, DC, SC, DC 3, SC 9, DC, SC 9, DC 8, SC 11, DC 8, SC 9, DC, SC 9, DC 3, SC, DC, BS

Row 24 - Color B: BS, SC, DC, SC 71, DC, SC, BS

Row 25 - Color A: BS, DC, SC, DC 5, SC 5, DC 5, SC 5, DC 8, SC 15, DC 8, SC 5, DC 5, SC 5, DC 5, SC, DC, BS

Row 26 - Color B: BS, SC 75, BS

Row 27 - Color A: BS, DC 28, SC 19, DC 28, BS

Row 28 - Color B: BS, SC 75, BS

Row 29 - Color A: BS, DC, SC, DC 12, SC, DC 12, SC 21, DC 12, SC, DC 12, SC, DC, BS

Row 30 - Color B: BS, SC, DC, SC 71, DC, SC, BS

Row 31 - Color A: BS, DC, SC, DC 11, SC 3, DC 11, SC 21, DC 11, SC 3, DC 11, SC, DC, BS

Row 32 - Color B: BS, SC 75, BS

Row 33 - Color A: BS, DC 11, SC 7, DC 10, SC 9, DC, SC 9, DC 10, SC 7, DC 11, BS

Row 34 - Color B: BS, SC 75, BS

Row 35 - Color A: BS, DC, SC, DC 7, SC 11, DC 10, SC 5, DC 5, SC 5, DC 10, SC 11, DC 7, SC, DC, BS

Row 36 - Color B: BS, SC, DC, SC 71, DC, SC, BS

Row 37 - Color A: BS, DC, SC, DC 5, SC 15, DC 31, SC 15, DC 5, SC, DC, BS

Row 38 - Color B: BS, SC 75, BS

Row 39 - Color A: BS, DC 5, SC 19, DC 27, SC 19, DC 5, BS

Row 40 - Color B: BS, SC 75, BS

Row 41 - Color A: BS, DC, SC, DC 2, SC 21, DC 25, SC 21, DC 2, SC, DC, BS

Row 42 - Color B: BS, SC, DC, SC 71, DC, SC, BS

Row 43 - Color A: BS, DC, SC, DC 2, SC 21, DC 25, SC 21, DC 2, SC, DC, BS

Row 44 - Color B: BS, SC 75, BS

Row 45 - Color A: BS, DC 5, SC 9, DC, SC 9, DC 27, SC 9, DC, SC 9, DC 5, BS

Row 46 - Color B: BS, SC 75, BS

Row 47 - Color A: BS, DC, SC, DC 5, SC 5, DC 5, SC 5, DC 31, SC 5, DC 5, SC 5, DC 5, SC, DC, BS

Row 48 - Color B: BS, SC, DC, SC 71, DC, SC, BS

Row 49 - Color A: BS, DC, SC, DC 71, SC, DC, BS

Row 50 - Color B: BS, SC 75, BS

Row 51 - Color A: BS, [DC 3, SC 3] 12 times, DC 3, BS

Row 52 - Color A: BS, SC 75, BS

Stitch Key

Updated 5.31.22

1

I have created many of the stitches and notation system in my designs.
There is not a current standard notation system for Mosaic Overlay
crochet, so please take some time to familiarize yourself with mine.

I have used the Craft Yarn Council Standards abbreviations.
Here is a link to that list. <https://www.craftyarncouncil.com/standards>

***Please note-several symbols are color-coded.
Do not print your charts in grey-scale!**

1) **SCBLO**

Chart symbol



Written abbreviation

SC

Definition

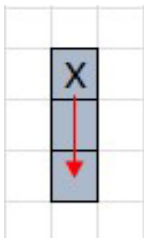
Single Crochet into back loop of
current row.



[Video Tutorial: SC](#)

2) **DCFLO**

Chart symbol



Written abbreviation

DC

Definition

Double Crochet into front loop of
corresponding stitch 2 rows below.



[DC - Original Tutorial](#)

[UPDATE: DC](#)

Stitch Key

Updated 5.31.22

2

- 3) **Border Stitch** (this is the new version. I've also included the video link for the original version if you prefer that method.

Chart symbol



Written abbreviation

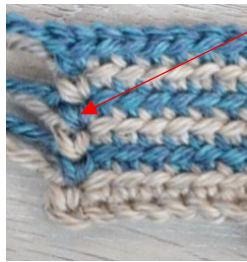
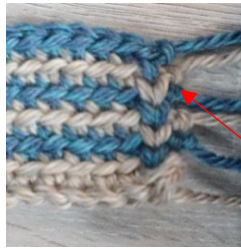
BS

Definition

Use a Border Stitch to start and end each row beginning in row 2. (*Row 1 is the foundation row)

Beginning BS: make a standing SC between the legs of the first stitch.

Ending BS: make a SC between the legs of the last stitch, CH 1. Cut yarn.



[Border Stitch - Original version](#)

[Updated Border Stitch Tutorial](#)