

STITCH KEY

9) Angled Dec 1R

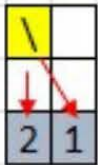
Chart symbol Written abbreviation

Definition



Angled Dec 1R

DC the first half of the decrease 1 to the right in loop 1, then finish the decrease directly below in loop 2.



[Tutorial: Angled Dec 1R](#)

Heather Noble Designs

I have created many of the stitches and notation system in my designs.
 There is not a current standard notation system for Mosaic Overlay
 crochet, so please take some time to familiarize yourself with mine.

I have used the Craft Yarn Council Standards abbreviations.
 Here is a link to that list. <https://www.craftyarnCouncil.com/standards>

***Please note-several symbols are color-coded.**

Do not print your charts in grey-scale!

1) **SCBLO**

Chart symbol



Written abbreviation

SC



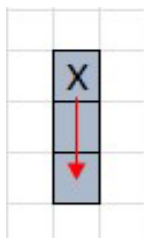
Definition

Single Crochet into back loop of
 current row.

[Video Tutorial: SC](#)

2) **DCFLO**

Chart symbol



Written abbreviation

DC



Definition

Double Crochet into front loop of
 corresponding stitch 2 rows below.

[DC - Original Tutorial](#)

[UPDATE: DC](#)

3) **Border Stitch** (this is the new version. I've also included the video link for the original version if you prefer that method.)

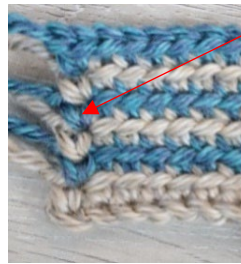
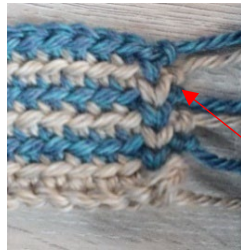
Chart symbol

Written abbreviation

Definition



BS



Use a Border Stitch to start and end each row beginning in row 2. (*Row 1 is the foundation row)

Beginning BS: make a standing SC between the legs of the first stitch.

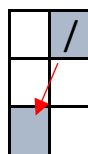
Ending BS: make a SC between the legs of the last stitch, CH 1. Cut yarn.

[Border Stitch - Original version](#)

[Updated Border Stitch Tutorial](#)

4) **Angled DC 1L** (can be made in Color A or Color B)

Chart symbol



Written abbreviation

Angled DC 1L



Definition

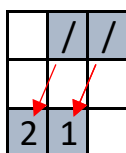
Work an angled double crochet 1 to the left.

[Angled DC 1L - Original Tutorial](#)

[UPDATE: Angled DC 1L](#)

*Example 1: Angled DC 1L in multiples

Chart symbol



Written abbreviation

[Angled DC 1L] 2 times

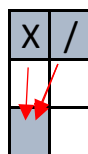


Definition

Work 2 angled DC 1L in a row.

*Example 2: Combined with DC

Chart symbol



Written abbreviation

sk 1, DC 2 in the next st

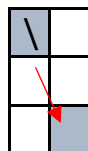


Definition

Skip 1, work 2 DC stitches into the next loop. (Both stitches into the same loop)

5) **Angled DC 1R** (can be made in Color A or Color B)

Chart symbol



Written abbreviation

Angled DC 1R



Definition

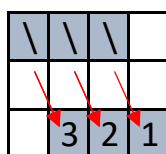
Work an angled double crochet 1 to the right.

[Angled DC 1R - Original Tutorial](#)

[UPDATE: Angled DC 1R](#)

*Example 1: Angled DC 1R in multiples

Chart symbol



Written abbreviation

[Angled DC 1R] 3 times

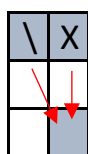


Definition

Work 3 angled DC 1R in a row.

*Example 2: Combined with DC

Chart symbol



Written abbreviation

DC 2 in the next st, sk 1

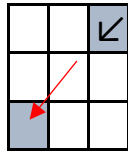


Definition

Work 2 DC stitches into the next loop, skip 1. (Both stitches into the same loop.)

6) **Angled DC 2L** (can be made in Color A or Color B)

Chart symbol



Written abbreviation

Angled DC 2L



Definition

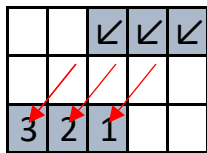
Work an angled double crochet 2 to the left.

[Angled DC 2L - Original Tutorial](#)

[UPDATE: Angled DC 2L](#)

*Example 1: Angled DC 2L in multiples

Chart symbol



Written abbreviation

[Angled DC 2L] 3 times

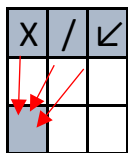


Definition

Work 3 angled DC 2L in a row.

*Example 2: Combined with / and DC

Chart symbol



Written abbreviation

sk 2, DC 3 in the next st

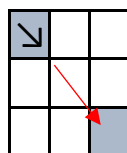


Definition

Skip 2, work 3 DC stitches into the same loop.

7) **Angled DC 2R** (can be made in Color A or Color B)

Chart symbol



Written abbreviation

Angled DC 2R



Definition

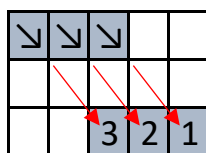
Work an angled double crochet 2 to the right.

[Angled DC 2R - Original Tutorial](#)

[UPDATE: Angled DC 2R](#)

*Example 1: Angled DC 2R in multiples

Chart symbol



Written abbreviation

[Angled DC 2R] 3 times

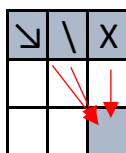


Definition

Work 3 angled DC 2L in a row.

*Example 2: Combined with / and DC

Chart symbol



Written abbreviation

DC 3 in the next st, sk 2



Definition

Work 3 DC stitches into the same loop, skip 2.

Yellow boxes indicate a **DECREASE**.

8) **Angled Dec 1L**

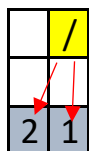
Chart symbol Written abbreviation

Definition



Angled Dec 1L

DC the first half of the decrease directly below into loop 1 and finish the decrease 1 to the left in loop 2.



[Tutorial: Angled Dec 1L](#)

9) **Angled Dec 1R**

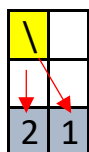
Chart symbol Written abbreviation

Definition



Angled Dec 1R

DC the first half of the decrease 1 to the right in loop 1, then finish the decrease directly below in loop 2.



[Tutorial: Angled Dec 1R](#)

10) **Angled Dec 2L**

Chart symbol Written abbreviation

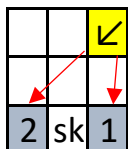
Definition



Angled Dec 2L

DC the first half of the decrease directly below into loop 1, skip a stitch, and finish the decrease 2 to the left in loop

[Tutorial: Angled Dec 2L](#)



11) **Angled Dec 2R**

Chart symbol Written abbreviation

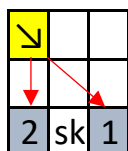
Definition



Angled Dec 2R

DC the first half of the decrease 2 to the right in loop 1, skip a stitch, then finish the decrease directly below in loop 2.




[Tutorial: Angled Dec 2R](#)




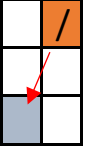

Orange box indicates ANCHORED.
(This prevents a gap in your work)

Part 1:
Orange boxes with 1 symbol:

12) **Anchor DC**

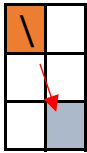
<u>Chart symbol</u>	<u>Written abbreviation</u>	<u>Definition</u>
 	<div style="border: 1px solid black; padding: 5px; margin-bottom: 5px; text-align: center;">Anchor DC</div> 	<div style="border: 1px solid black; padding: 5px; margin-bottom: 5px;"> 1) Anchor stitch 2) work a regular DC </div> <p style="text-align: center; color: #4a90e2;">Tutorial: Anchored DC</p>

13) **Anchor Angled DC 1L**

<u>Chart symbol</u>	<u>Written abbreviation</u>	<u>Definition</u>
 	<div style="border: 1px solid black; padding: 5px; margin-bottom: 5px; text-align: center;">Anchor Angled DC 1L</div> 	<div style="border: 1px solid black; padding: 5px; margin-bottom: 5px;"> 1) Anchor stitch 2) work Angled DC 1L </div>

14) **Anchor Angled DC 1R**

Chart symbol



Written abbreviation

Anchor
Angled DC 1R

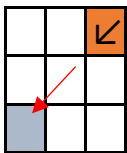


Definition

- 1) Anchor stitch
- 2) work Angled DC 1R

15) **Anchor Angled DC 2L**

Chart symbol



Written abbreviation

Anchor
Angled DC 2L

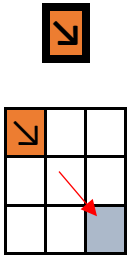


Definition

- 1) Anchor stitch
- 2) work Angled DC 2L

16) **Anchor Angled DC 2R**

Chart symbol



Written abbreviation

Anchor
Angled DC 2R

Definition

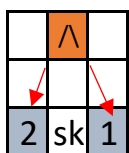
- 1) Anchor stitch
- 2) work Angled DC 2R



Part 2:
Orange boxes with 2 symbols are ANCHORED DECREASES

17) **Anchor Dec 1R and 1L**

Chart symbol



Written abbreviation

Anchor Dec
1R and 1L

Definition

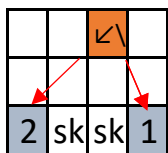
- 1) Anchor stitch
- 2) work Angled Dec 1R and 1L



[Tutorial: Anchor Decrease](#)

18) **Anchor Dec 1R and 2L**

Chart symbol



Written abbreviation

Anchor Dec
1R and 2L

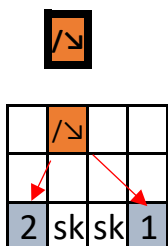
Definition

- 1) Anchor stitch
- 2) work Angled Dec 1R and 2L



19) **Anchor Dec 2R and 1L**

Chart symbol



Written abbreviation

Anchor Dec
2R and 1L

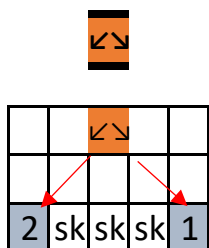
Definition

- 1) Anchor stitch
- 2) work Angled Dec 2R and 1L



20) **Anchor Dec 2R and 2L**

Chart symbol



Written abbreviation

Anchor Dec
2R and 2L

Definition

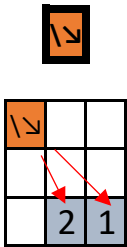
- 1) Anchor stitch
- 2) work Angled Dec 2R and 2L



[Video Tutorial: Anchor Dec 2R and 2L](#)

21) **Anchor Dec 2R and 1R**

Chart symbol



Written abbreviation

Anchor Dec
2R and 1R

Definition

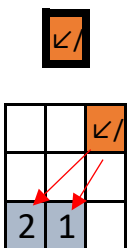
- 1) Anchor stitch
- 2) work Angled Dec 2R and 1R



[Video Tutorial: Anchor Dec 2R and 1R](#)

22) **Anchor Dec 1L and 2L**

Chart symbol



Written abbreviation

Anchor Dec
1L and 2L

Definition

- 1) Anchor stitch
- 2) work Angled Dec 1L and 2L



[Video Tutorial: Anchor Dec 1L and 2L](#)

23) Anchor Dec 3 together

Chart symbol

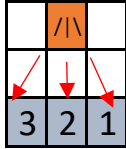


Written abbreviation

Anchor Dec
3 Together

Definition

- 1) Anchor stitch
- 2) work Angled Dec 1R, DC, 1L



[Video Tutorial: Anchor Dec 3 Together](#)